

## 3D Printers for Education Post-Primary Schools

The Department of Education included 3D Printers in their updated Equipment List, November 2020. 3D Printers are now included in the equipment list for Engineering, Applied Technology/Technology, Construction Studies/Wood Technology and Graphical Design Lab.

### SurfBox supply 3D Printers for Education

SurfBox is a leading supplier of 3D Printers to Public Libraries and Local Authorities in Ireland. We supply Creality, Ultimaker and Snapmaker 3D Printers, we fully support the printers, providing on site warranty which includes parts and labour. We recommend the Creality Ender 6 or Sermoon D1 for Education and Learning.

### What is the best 3D printer for your school?

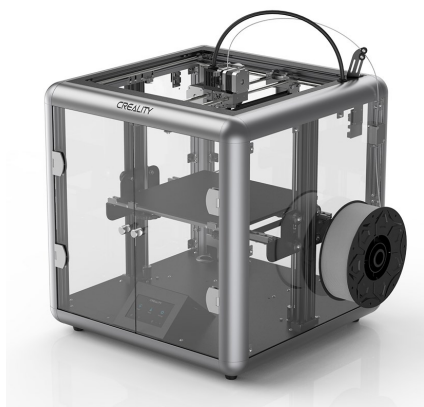
There are 100's of 3D printers available on the market today, ranging in price from under 200€ to 10,000€ plus.

You need a well built 3D printer with a good sized build volume, that produces industrial quality prints that is reliable and easy to use.

Value for money, a well priced 3D printer that is supported by a local Irish company, who will maintain and service your printer onsite, ensuring it's operation and availability for students to use.

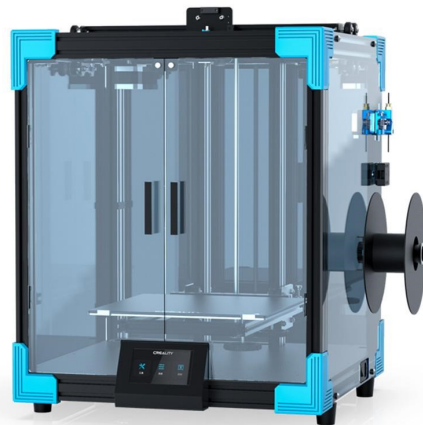
We have selected a range of 3D printers that meets the requirements for use in education. We will provide a full warranty service with onsite repair, parts and labour included.

### Sermoon D1 - 280x260x310mm



### Ender-6

**3 times faster printer speed**



### The service we provide

- ⇒ We fully assemble, calibrate and test 3D printers before installing and commissioning at your School.
- ⇒ We provide full technical support including support for CURA slicing software.
- ⇒ Our onsite warranty includes parts and labour.
- ⇒ We provide online and onsite teacher training.
- ⇒ We supply Filament and all other accessories required.

### Medical



### 3D Printers for Education

We have selected the following 3 printers that we believe are right for education. The Creality Ender-6 and Sermoon D1, both printers come with a big build volume, fast print speeds and produce industrial quality prints. We have also selected the Ultimaker 2+ Connect a high end printer that is reliable and easy to use.

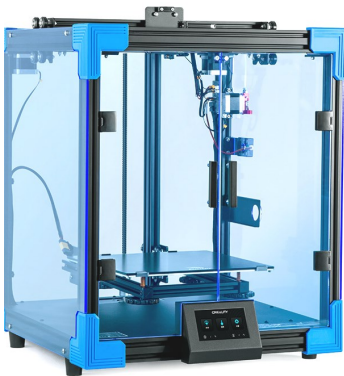
#### Key features

**Industrial 3D Printer:** More precise printing, more durable and producing industrial quality prints.

**Large Printing Size:** Can meet more of your printing requirement. Everything that you can imagine and the machine can hold.

**Printing Speed:** Ender-6 works quite well to achieve print speed up to 150mm/s, delivering the results faster.

**Enclosures:** All 3 printers come with well built enclosures, ensuring the heated and moving parts are well protected from the user.



**Creality Ender -6**



**Creality Sermoon D1**



**Ultimaker 2+ Connect**

### Printer Specifications

Hardware	Ender - 6	Sermoon D1	Ultimaker 2+ Connect
Print Size	250x250x400mm	280x260x310mm	223x220x205mm
Print resolution	100 micron	100 micron	200 - 20 micron
Heated Build plate	Yes ≤100°C	Yes ≤100°C	Yes (20 - 110°C)
Screen size	4.3 inch	4.3 inch	2.4 inch
Print Speed	150mm/s, 30-60mm/s (recommended)	60mm/s (recommended) ≤100mm/s	30-60mm/s (recommended)
Filament type and size	1.75mm PLA/TPU/ABS	1.75mm PLA/TPU/ABS	2.85mm PLA/ABS/TPU/Nylon
Print mode	SD card	Wireless & SD card	Wireless & USB
Dimensions	W: 495cm, D: 495 cm, H: 650 cm	W: 500cm, D: 500 cm, H: 531 cm	W: 342cm, D: 460 cm, H: 580 cm